

About ..... 1

Quick Start ..... 2

    Presenter..... 2

        Presenting ..... 3

        Presenter’s Console ..... 4

        Audience..... 4

    Share..... 5

Frequently Asked Questions ..... 6

    General ..... 6

        Can I use iX2X out of the box – without integration? ..... 6

        How does private branding work? ..... 6

        What management reporting is available? ..... 6

        What web services are currently available? ..... 6

    Presenter..... 6

        How do I stream my video? ..... 6

        How do I get the slides into a meeting? ..... 6

        How do I include polls, quizzes and web tours into a presentation? ..... 6

        How do I save my presentation for on demand playback? ..... 6

        How do I switch presenters – people at different locations? ..... 6

    Share..... 7

        How many people can be in a meeting? ..... 7

        Who can show their video? ..... 7

## About

iX2X includes two applications;

- **Presenter** – Presenter(s) video and a slide show (PowerPoint and URL tours)
- **Share** – Video (from multiple users), a shared whiteboard and shared file uploads

While **Share** is a collaboration tool and is designed for “high levels of interaction”, **Presenter** can be streamed to many people and can also be recorded for on demand playback.

### Quick Start

Start by going to:

<http://www.ix2x.com/Demo.htm>

#### **Presenter**

- Click on the “Log On” button to open the presenter’s window.
  - Start your camera
  - Click on a Table of Contents entry to change a slide – or show a live Poll or URL
  - Drag the pointer (it automatically “homes” when you change a slide)
  - Click the “Console” button to check in on the audience
- Click on the “Enter Meeting” to open the audience window
  - Note the presenter’s video, slide and pointer
  - Send a message – it appears in the console

#### **Share**

- Click on the “Enter Collaboration Meeting” button
  - Enter any user name. You can be the admin by entering !!.
  - Start your camera(s)
  - If you are the admin – double click on any user to change permissions
  - Upload and down load files
  - Use the whiteboard to share and mark up images
- Do this on other PC’s

### **Presenter**

**Presenter** has two connection modes; Low Latency and Broadcast (latency refers to the time delay of the video when transmitted over the web). Both the presenter(s) and the audience must connect in the same connection mode. Note: the connection mode for the web cast is normally preset before the presentation starts but for demonstration purposes you are able to switch the connection mode - Low Latency or Broadcast.

Low Latency is typically used when everyone is also on a telephone call (like a web conference). You cannot record the video for on demand playback in Low Latency mode nor is Low Latency recommended for streaming media to many people.

## Presenting

The presenters screen can be opened directly or through your own business applications. The Demo page opener is pre-populated with our demo info.



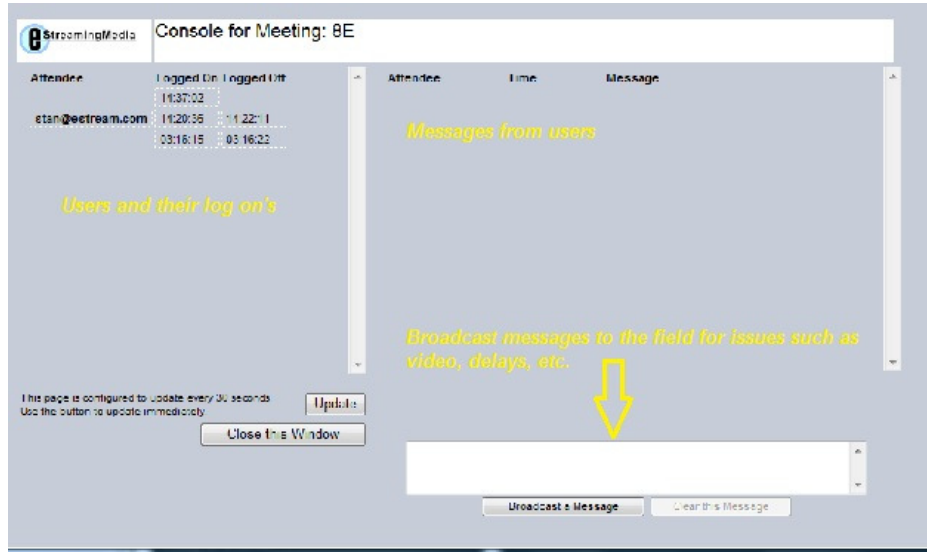
Here is what the presenter controls:

- "Start My Camera" pushes the presenters' video to everyone connected. If there are multiple presenters, their videos will be tiled.
- The slides (or URL's) which are changed by the presenter by clicking on the table of contents.
- The pointer which can be dragged anywhere on the screen to high light items to the audience.

*Note that changing slides or the pointer position is only available to the presenters.*

### Presenter's Console

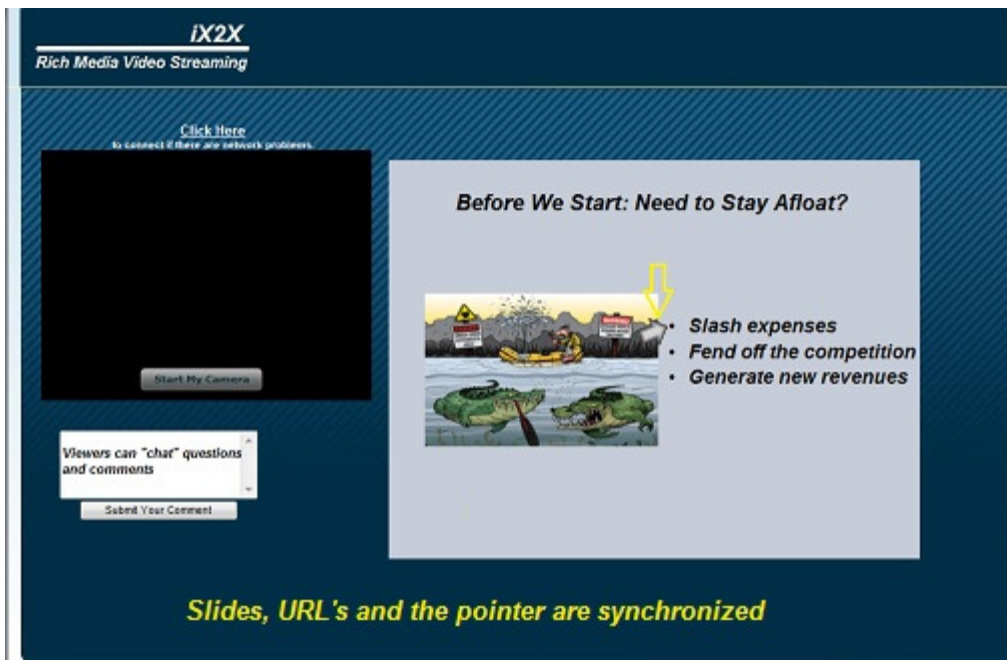
The console shows who is on line and any messages such as comments or questions from the field. Only the presenters have access to this.



In addition, the presenter can broadcast messages to the field (e.g., “the presentation will resume at 14:00 GMT”).

### Audience

The audience screen is typically opened by going to a site and entering a 3 character meeting ID. You can open the screen with special fields for integration with your business systems.



Note that the audience screen is identical to the presenters' screen except that audience members:

- Cannot change the slide or pointer position
- Have a text box to submit questions and comments (these inputs from the field appear on the Console)

### Share

**Share** is a collaboration tool and rather than having presenters and an audience, there are levels of permissions or roles that can be changed by the meeting administrator. These roles include:

- **Host/Room Owner** – Can do everything including changing a user's role by double clicking on the user.
- **Participants** can share their video, upload and download files and use the shared whiteboard
- The **Audience** just watches and cannot add their video or change the whiteboard

The screenshot displays the iX2X Rich Media Video Streaming interface. At the top, the iX2X logo and "Rich Media Video Streaming" are on the left, and "Private branded backgrounds" is on the right. The main area is divided into several sections:

- Left Panel:** Contains a "Start My Camera" button, a participant list with "stan, Participant", and a "Shared Files" section with a table for file management.
- Center Panel:** A large whiteboard area with a toolbar on the left containing various drawing and editing tools (pointer, arrow, highlighter, eraser, text, image, and a red X).
- Right Panel:** A text box stating "The shared white board includes tools for adding image files on the users' PC's".

name	size

## Frequently Asked Questions

### *General*

#### **Can I use iX2X out of the box – without integration?**

Yes. Once your account is set up, you would upload slides shows, branding and create meetings.

#### **How does private branding work?**

Note that **Presenter** and **Share** use a graphic background that can be changed for each meeting. It's a 1200x800 gif. In addition, the opening of the meeting is from your web page (Check out the code behind the 1X2X/Demo.htm page – it's a div and an iFrame).

#### **What management reporting is available?**

*iX2X* tracks who logged in to a meeting, when and for how long. In the case of Presenter, the slides actually watched by the audience members are also tracked.

#### **What web services are currently available?**

There are two major web services:

- CreateMeeting – sets up a meeting on *iX2X* that people can join.
- GetMeetingDetails – returns the details of meetings, i.e., the reports.

### *Presenter*

#### **How do I stream my video?**

Video is streamed by the applications. All you need to do is connect your camera.

#### **How do I get the slides into a meeting?**

*iX2X* includes a Publisher which packages and uploads the PowerPoint slides.

#### **How do I include polls, quizzes and web tours into a presentation?**

*iX2X* includes a PowerPoint add in that creates pseudo slides that jump to the proper URL's. Polls and quizzes are authored on *iX2X*'s web site.

#### **How do I save my presentation for on demand playback?**

You specify that the meeting is to be saved when the meeting is set up. There is an authoring application that enables you to cut out certain sections of the presentation.

#### **How do I switch presenters – people at different locations?**

The other presenters log on as a presenter. When it is their time to speak, they start their cameras. Note: only one camera at a time is allowed in Broadcast mode.

## ***Share***

### **How many people can be in a meeting?**

There isn't a limit – however, the video stream requires bandwidth.

### **Who can show their video?**

Anyone with a permission of Participant or Admin can show their video. Each user can control which video they watch.